



MEMS Mass Flow Sensors

With calorimetric sensing

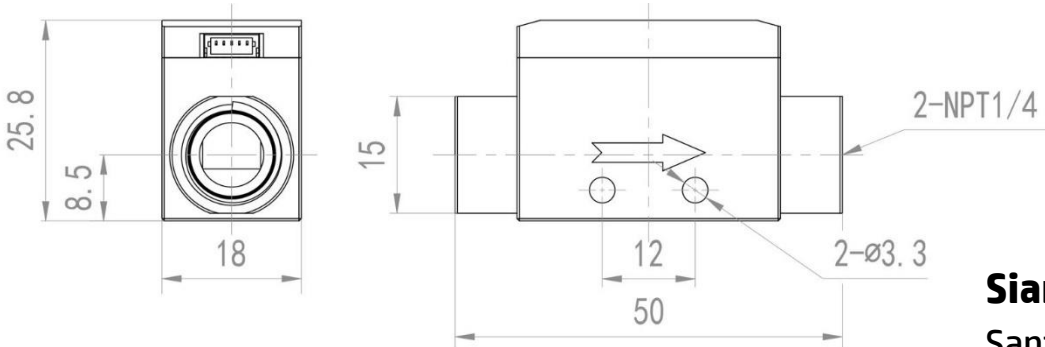
FS5200 Series

FS5200 series mass flow sensors are designed for general purpose flow metering and control applications and are made with Siargo's proprietary MEMS mass flow sensors and smart electronic circuitry. The sensors directly measure mass flow with a very low pressure loss. The current models can be readily applied to oil and gas process monitor, leakage detection; and other applications such as an alternative to the bubble flow meter.

FS5200 can measure a flow down to 0.2 sccm and up to 300 SLPM. The connectors can be fully customized.

Dimensions

20sccm full scale model



Siargo Ltd.
Santa Clara, California
www.Siargo.com
408.969.0368
info@Siargo.com

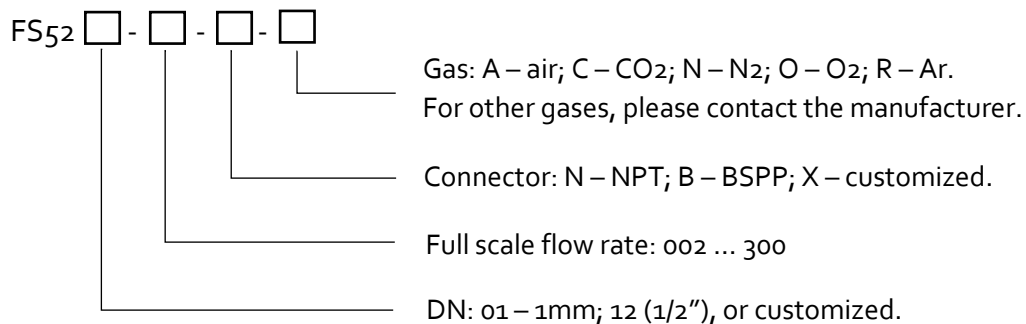


Specifications

Flow range	0~0.02...300	SLPM
Accuracy	$\pm(1.5+0.2FS)$	%
Repeatability	0.25	%
Response time	200	msec
Power supply	8~24 (50mA)	Vdc
Output	Linear analog: 0.5~4.5 Vdc / Digital: I ² C	
Pressure loss (max.)	0.03 @0.02 SLPM	kPa
Pressure rating	1.0	MPa
Temperature	-10 ~ 55	°C
Humidity	<95 (no condensation)	%RH
Mechanical connection	NPT or customized	
Pin-out	SM05B-SRSS-TB (JST)	
Calibration	Air @ 20°C, 101.325 kPa	
Weight	350.0 (SS304)	g
Storage temperature	-20 ~ 70	°C

Note: Parameters specified at the calibration conditions.

Product selection



Note: For CO₂ and N₂O, the full-scale flow rate is 80% of air.